

ORDINANCE NO. 57

ORDINANCE REPEALING ORDINANCE NO. 55, AND ADOPTING THE CORRECTED ZONING MAP, PURSUANT TO ORDINANCE NO. 50, DUNES CITY ZONING ORDINANCE, AND DECLARING AN EMERGENCY TO EXIST.

WHEREAS, the City of Dunes City adopted a Zoning Ordinance on July 13, 1978, and

WHEREAS, said Zoning Ordinance required the City to create and adopt a map setting forth the zones established by that Ordinance, and

WHEREAS, said map shall be known as the Zoning Map of Dunes City, Oregon, and

WHEREAS, said map was adopted on the 8th day of February, 1979, and

WHEREAS, it has come to the City Council's attention that the property described as Tax Lot 6000, Tax Map 19-12-34-2-1, located in the Westlake area of Dunes City, is and has been since before the time of the incorporation of Dunes City, a commercial district, and

WHEREAS, the property is reflected on the Zoning Map as being residential, and

WHEREAS, it appears the area was zoned residential by oversight and omission,

THE CITY OF DUNES CITY, does ordain as follows:

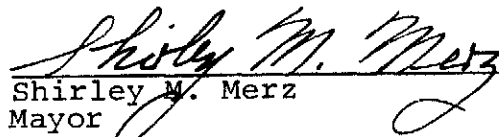
The City adopts a map establishing zoning districts within the municipal boundaries in Dunes City. Said map is dated the 12th day of April, 1979, and signed by Shirley M. Merz, Mayor of Dunes City, and Patricia L. Barber, City Recorder.

Inasmuch as this Ordinance is necessary for the immediate preservation of the public health, peace, welfare and safety of the City of Dunes City, Oregon, an emergency is declared to exist and provided for in Chapter VIII, Section 35, of the City of Dunes City Charter, and this Ordinance shall take effect and in force from and after its passage by the City Council and approval of the Mayor.

PASSED BY THE CITY COUNCIL OF DUNES CITY, OREGON, this 12th day of April, 1979.

APPROVED BY THE MAYOR this 13th day of April, 1979.

ATTEST:


Shirley M. Merz
Mayor


Patricia L. Barber
City Recorder

To: Dunes City Council
From: Dunes City Planning Commission
Date: February 28, 1979
Subject: Error on Zoning Map as Adopted

It has been brought to the attention of the Planning Commission that an error exists on the Zoning map recently adopted by the City Council. Inadvertently, Tax Lot 6000, on Tax Map 19-12-34-2-1, was zoned residential, when in fact it is commercial property. It is a portion of Sitlcoos Lake Resort.

Therefore, the Planning Commission recommends that the City Council adopt Revision 1 to the Zoning Map, showing Tax Lot 6000, Tax Map 19-12-34-2-1, as commercial property.

Respectfully submitted,



Mary Jaye Gerber
Secretary to the
Planning Commission

SILT-CROSS LAKE RESORT
WESTLAKE, ORE. - TR. 19-12-34-2
DON & PAULINE KREICK

2-26-79

Dune City
82877 Spruce St.
Westlake, Oregon

Dune City Council;

It has been called to my attention that somehow inadvertently part of the property known as Siltcross Lake Resort has been left out of the Commercial zone on the final zoning map.

In the city office on map # 19-12-34-2 the property is marked by an outline of dashes. It includes tax lots numbered 5300, 5400, 5500 and 6000. The tax lot # 6000 is the one left out. With this letter would like to request the zoning map be corrected to include this tax lot in the commercial zone. This land has been in our ownership and has been operated as part of our resort business since before Dune City was formed.

Sincerely,
Donald Kreick

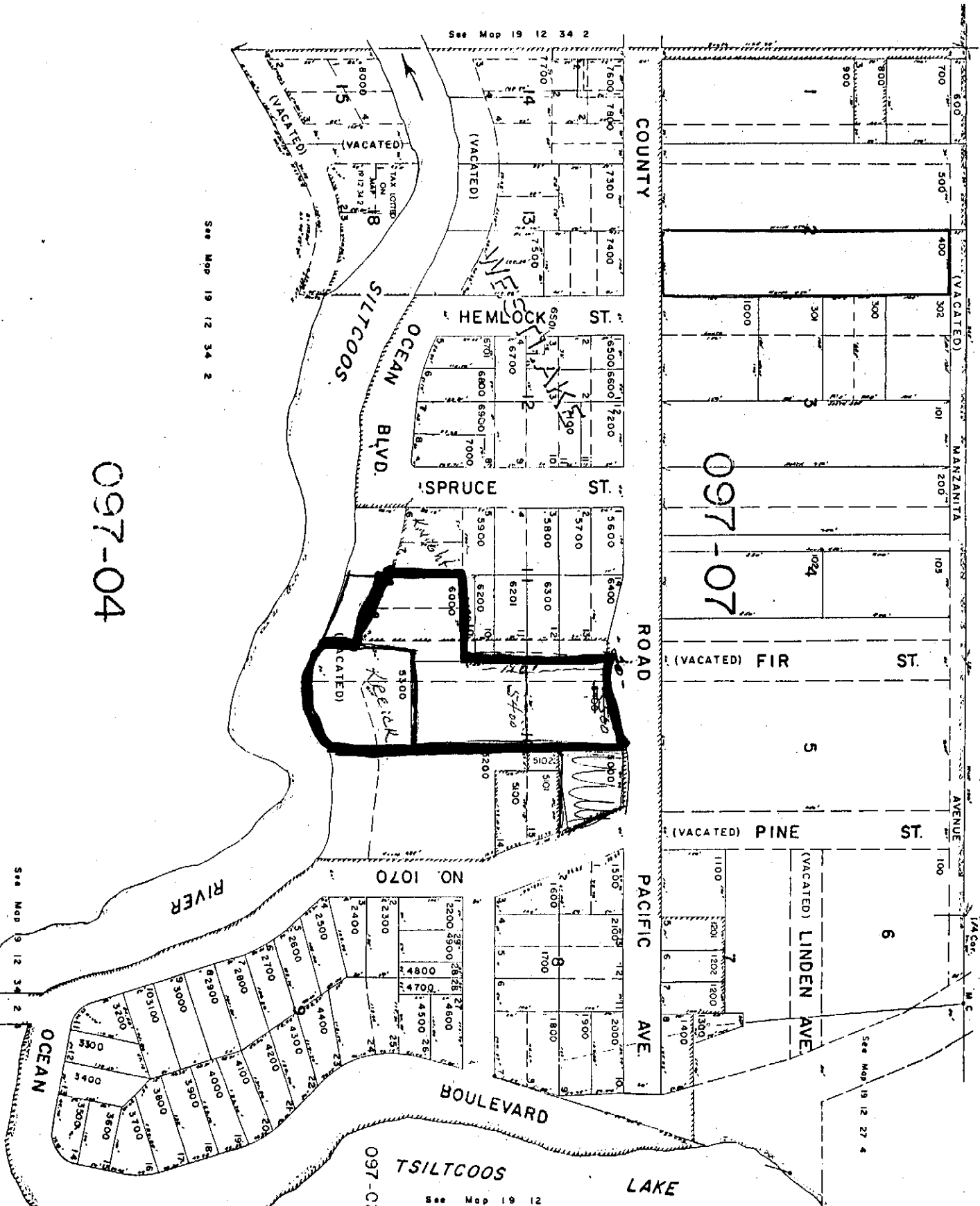


NE 1/4 NW 1/4 Sec 34 T19S R12W WM.
LANE COUNTY
1"=100'

19 12 34 2 1

See Map 19 12 27 3

See Map 19 12 27 4



097-04

097-07

097-02

See Map 19 12 34 2

See Map 19 12 34 2

See Map 19 12

097-07

(VACATED) FIR

PACIFIC

AVE.

ROAD

HEMLOCK ST.

SPRUCE ST.

ST.

SILTCOOS

WOT

7400
7500
82876

6500 6600 7200
82887
82878
6700 82871
6701 6800 6900 7000
82865

5600 6400 4720
82887
5800 6300 82878
6200 82872
5900 6200 82866
82862
6000 PARK TRAILER
5300 82855

RIF RESORT

(VACATED)

OCEAN

BLVD.

SILTCOOS

LIST OF COMMERCIAL AREAS

TAX LOT LIST OF COMMERCIAL AREAS

19-12-22-1	Tax Lots	800&900
19-12-22-4	" "	1000&300
19-12-22-3	" "	100 & 200
19-12-27-1	" "	6200 & 6800
19-12-27-4	" "	1300 & 1301 to a line 400' south of county road R.O.W.
19-12-34-2-1	" "	1600,1700,1800,2200 4900,4800,4700,4600 4500,3600,5400,5300 6000.
19-12-34-2-4	" "	1300 & 2000